



Motivation Monday! March 13, 2023

Playing in the Rain

All images © 1990-2023 Stampin' Up!®

<https://stampwithjeanne.com> | Ordering: <https://jeanneciolli.stampinup.net>

Supplies:

- **Stamp Sets:** Playing in the Rain (160542), Paper Pumpkin 2/23 Sunshine & Smiles (162432)
- **Card Stock (CS) and Designer Series Paper (DSP):** Old Olive (147002); (155574); Basic White (159276); Thick White CS (159229); Balmy Blue (146982); Rain or Shine DSP (160540)
- **Stamp Pads:** Memento Tuxedo Black (132708); Old Olive (147090)
- **Die-cuts:** Playing in the Rain (160550), Sunshine & Smiles (162486); Stylish Shapes (159183); Rectangle Stitched Framelits* (148551)
- **Tools:** Stampin' Cut & Emboss Machine (149653) and accessories;
- **Embellishments:** Sweet Sorbet Metallic Woven 1/8" Ribbon 3/8" (159200);
- **Adhesives:** Stampin' Dimensionals (104430); Stampin' Seal Adhesive (152813); Multipurpose Liquid Glue (110755); Tear & Tape (154031)



*Retired (Alternate dies: Stitched Rectangles (151820))

Measurements: See templates for scoring.

- Old Olive CS: 5 1/2" x 12" (score at 4" and 8"), 2 1/2" x 3" (x4), 2 3/4" x 3" (x2), 4 1/2" x 5 1/2" (score at 1/2")
- Balmy Blue CS: 3 3/4" x 5 1/4" (x2)
- Thick White CS: Scrap for stamped and die-cut images; 3 1/4" x 8 1/2" (score at 2 3/4" and 5 1/2"), 3 1/4" x 9" (score at 1/2, 3 1/2", and 6 1/4")
- Basic White CS: 2 1/4" x 2 3/4"
- Umbrella DSP: 3 3/4" x 5 1/4" (x4), 3/4" x 2-1/4"
- Rain DSP: 2 1/4" x 2 3/4" (x3)
- Animal DSP: Die-cut animals, clouds, and umbrella
- Daisy DSP: 3-1/2" x 5", 2" circle, clouds
- Ribbon: 22"

You can follow my step-by-step stamping tutorial here: <https://bit.ly/40pYLgn>



Copyright © Jeanne Ciolli, The Stampin' Studio
This PDF is private and should not be sold or distributed.

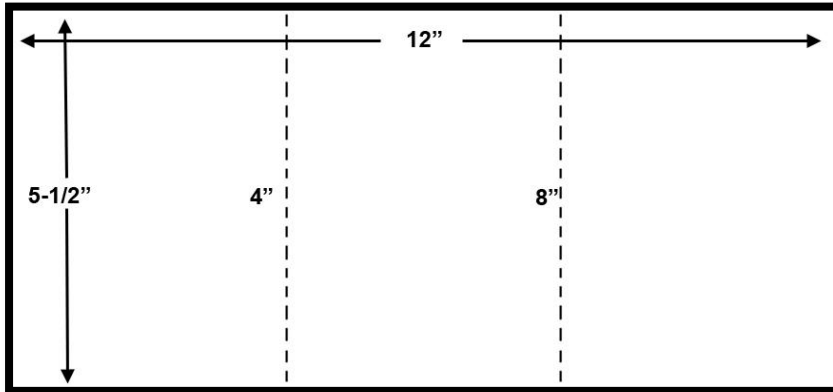


Motivation Monday! March 13, 2023

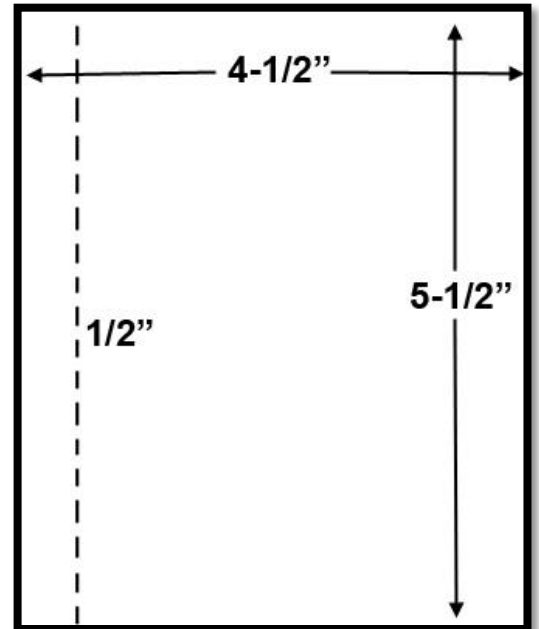
Playing in the Rain

All images © 1990-2023 Stampin' Up!®

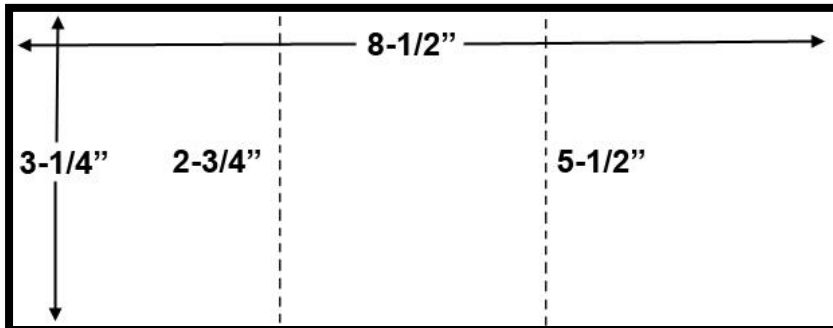
<https://stampwithjeanne.com> | Ordering: <https://jeanneciolli.stampinup.net>



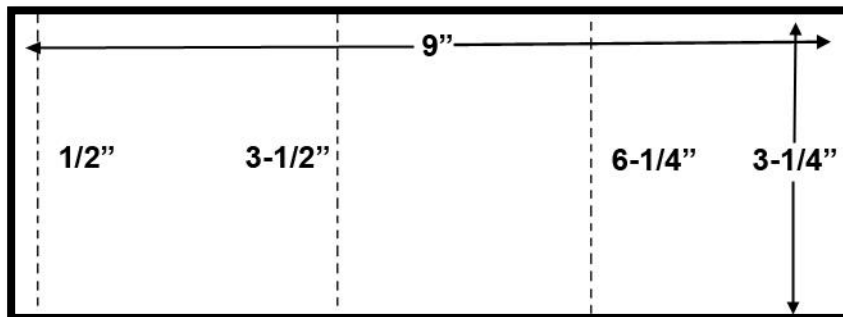
OLD OLIVE BASE



OLD OLIVE BASE EXTENSION



THICK WHITE LEFT



THICK WHITE RIGHT

